



Sani*Tech® Ultra

The Next Generation
In High Performance
Platinum-Cured Silicone Tubing

Sani-Tech® Ultra



The Next Generation

Sani-Tech® Ultra represents the next generation in ultra-pure platinum-cured silicone tubing. Quite simply, it's a better product. Features like ultra-low extractables and longer pump life were engineered into Ultra by the experienced materials scientists of Saint-Gobain Performance Plastics to meet the stringent requirements of the biopharmaceutical market.

Characteristics

Fluid integrity is vitally important in many biopharmaceutical applications. Sani-Tech® Ultra formulations are manufactured and packaged in a certified clean room from the finest grade of silicone materials, and ultra-low TOCs ensure that contamination by extractables is kept to an absolute minimum, and the formulation imparts no taste or odors. Saint-Gobain Performance Plastics' silicone tubing is known for its superior pump life — and Sani-Tech® Ultra is no exception.

Biocompatibility

They are fully characterized, validated and tested to a variety of specifications including USP Class VI, ISO 10993, and EP 3.1.9. All detailed testing protocols are available on our product validation guide.

Features/Benefits

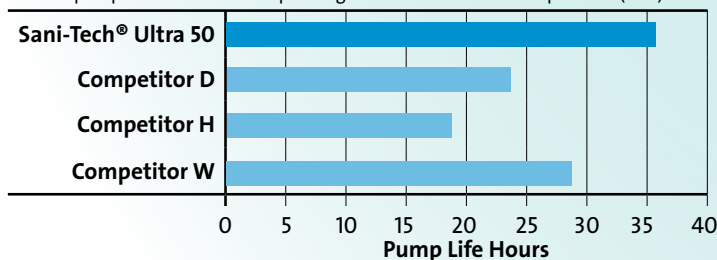
- Biopharmaceutical grade
- Ultra-low extractables
- Excellent flexibility
- Laser etched for lot traceability
- Available in 50 and 65 durometers
- Superior pump life
- Fully autoclavable and sterilizable
- Non-yellowing formulation
- Imparts no taste or odors
- Temperature range from -80°F (-62°C) to 500°F (260°C)
- Meets all USP Class VI, EP 3.1.9, FDA, and ISO criteria

Typical Applications

- Sterile fill and transfers
- Drug delivery
- Cell harvest
- Media processing
- Sanitary peristaltic pump tubing
- Production filtration and fermentation
- Bioreactor process lines

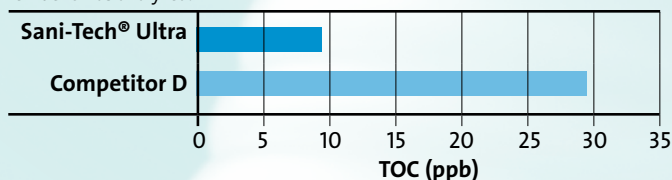
Comparative Peristaltic Pump Tubing Life

The table below depicts hours until failure of 1/4" ID x 3/8" OD tubing. In each case, a 3-roller pump head was utilized operating at 600 RPM at room temperature (73°F).



Comparative Extractables Concentrations

The table below illustrates the TOC concentrations of post autoclaved tubing samples. In each case the samples were subjected to a DI water flush and the effluent was analyzed.



Sani-Tech® Ultra Tubing Available Sizes

Part Number	ID Inches (mm)	OD Inches (mm)	Wall Inches	Part Number	ID Inches (mm)	OD Inches (mm)	Wall Inches	Part Number	ID Inches (mm)	OD Inches (mm)	Wall Inches
ULTRA-C-012-0	.012 (.30)	.024 (.61)	.006	ULTRA-C-156-1	5/32 (4.0)	7/32 (.55)	1/32	ULTRA-C-500-2	1/2 (12.7)	5/8 (15.9)	1/16
ULTRA-C-020-0	.020 (.51)	.036 (.91)	.008	ULTRA-C-156-2	5/32 (4.0)	9/32 (.71)	1/16	ULTRA-C-500-3	1/2 (12.7)	11/16 (17.4)	3/32
ULTRA-C-025-0	.025 (.64)	.047 (1.2)	.011	ULTRA-C-156-3	5/32 (4.0)	11/32 (8.7)	3/32	ULTRA-C-500-4	1/2 (12.7)	3/4 (19.1)	1/8
ULTRA-C-030-0	.030 (.76)	.066 (1.7)	.018	ULTRA-C-156-4	5/32 (4.0)	13/32 (10.3)	1/8	ULTRA-C-500-5	1/2 (12.7)	7/8 (22.2)	3/16
ULTRA-C-030-2	.030 (.76)	.160 (4.1)	.062	ULTRA-C-156-5	5/32 (4.0)	17/32 (13.5)	3/16	ULTRA-C-500-6	1/2 (12.7)	1 (25.4)	1/4
ULTRA-C-040-0	.040 (1.0)	.086 (2.2)	.023	ULTRA-C-156-6	5/32 (4.0)	21/32 (16.7)	1/4	ULTRA-C-625-1*	5/8 (15.9)	11/16 (17.4)	1/32
ULTRA-C-058-0	.058 (1.5)	.076 (1.9)	.009	ULTRA-C-187-1	3/16 (4.7)	1/4 (6.4)	1/32	ULTRA-C-625-2*	5/8 (15.9)	3/4 (19.1)	1/16
ULTRA-C-062-1	1/16 (1.6)	1/8 (3.2)	1/32	ULTRA-C-187-2	3/16 (4.7)	5/16 (7.9)	1/16	ULTRA-C-625-3	5/8 (15.9)	13/16 (22.2)	3/32
ULTRA-C-062-2	1/16 (1.6)	3/16 (4.7)	1/16	ULTRA-C-187-3	3/16 (4.7)	3/8 (9.5)	3/32	ULTRA-C-625-4	5/8 (15.9)	7/8 (22.2)	1/8
ULTRA-C-062-3	1/16 (1.6)	1/4 (6.4)	3/32	ULTRA-C-187-4	3/16 (4.7)	7/16 (11.1)	1/8	ULTRA-C-625-5	5/8 (15.9)	1 (25.4)	3/16
ULTRA-C-062-4	1/16 (1.6)	5/16 (7.9)	1/8	ULTRA-C-187-5	3/16 (4.7)	9/16 (14.2)	3/16	ULTRA-C-625-6	5/8 (15.9)	1-1/8 (28.5)	1/4
ULTRA-C-062-5	1/16 (1.6)	7/16 (11.1)	3/16	ULTRA-C-187-6	3/16 (4.7)	11/16 (17.4)	1/4	ULTRA-C-750-1*	3/4 (19.1)	13/16 (20.6)	1/32
ULTRA-C-062-6	1/16 (1.6)	9/16 (14.2)	1/4	ULTRA-C-250-1	1/4 (6.4)	5/16 (7.9)	1/32	ULTRA-C-750-2*	3/4 (19.1)	7/8 (22.2)	1/16
ULTRA-C-078-1	5/64 (2.0)	9/64 (3.6)	1/32	ULTRA-C-250-2	1/4 (6.4)	3/8 (9.5)	1/16	ULTRA-C-750-3	3/4 (19.1)	15/16 (23.8)	3/32
ULTRA-C-078-2	5/64 (2.0)	13/64 (5.2)	1/16	ULTRA-C-250-3	1/4 (6.4)	7/16 (11.1)	3/32	ULTRA-C-750-4	3/4 (19.1)	1 (25.4)	1/8
ULTRA-C-078-3	5/64 (2.0)	17/64 (6.7)	3/32	ULTRA-C-250-4	1/4 (6.4)	1/2 (12.7)	1/8	ULTRA-C-750-5	3/4 (19.1)	1-1/8 (28.5)	3/16
ULTRA-C-078-4	5/64 (2.0)	21/64 (8.3)	1/8	ULTRA-C-250-5	1/4 (6.4)	5/8 (15.8)	3/16	ULTRA-C-750-6	3/4 (19.1)	1-1/4 (31.7)	1/4
ULTRA-C-078-5	5/64 (2.0)	29/64 (11.5)	3/16	ULTRA-C-250-6	1/4 (6.4)	3/4 (19.0)	1/4	ULTRA-C-875-1*	7/8 (22.2)	15/16 (23.8)	1/32
ULTRA-C-078-6	5/64 (2.0)	37/64 (14.7)	1/4	ULTRA-C-312-1	5/16 (7.9)	3/8 (9.5)	1/32	ULTRA-C-875-2*	7/8 (22.2)	1 (25.4)	1/16
ULTRA-C-093-1	3/32 (2.4)	5/32 (4.0)	1/32	ULTRA-C-312-2	5/16 (7.9)	7/16 (11.1)	1/16	ULTRA-C-875-3	7/8 (22.2)	1-1/16 (26.9)	3/32
ULTRA-C-093-2	3/32 (2.4)	7/32 (5.5)	1/16	ULTRA-C-312-3	5/16 (7.9)	1/2 (12.7)	3/32	ULTRA-C-875-4	7/8 (22.2)	1-1/8 (28.5)	1/8
ULTRA-C-093-3	3/32 (2.4)	9/32 (7.1)	3/32	ULTRA-C-312-4	5/16 (7.9)	9/16 (14.3)	1/8	ULTRA-C-875-5	7/8 (22.2)	1-1/4 (31.7)	3/16
ULTRA-C-093-4	3/32 (2.4)	11/32 (8.7)	1/8	ULTRA-C-312-5	5/16 (7.9)	11/16 (17.4)	3/16	ULTRA-C-875-6	7/8 (22.2)	1-3/8 (34.9)	1/4
ULTRA-C-093-5	3/32 (2.4)	15/32 (11.9)	3/16	ULTRA-C-312-6	5/16 (7.9)	13/16 (20.6)	1/4	ULTRA-C-1000-1*	1 (25.4)	1-1/16 (26.9)	1/32
ULTRA-C-093-6	3/32 (2.4)	19/32 (15.1)	1/4	ULTRA-C-375-1	3/8 (9.5)	7/16 (11.1)	1/32	ULTRA-C-1000-2*	1 (25.4)	1-1/8 (28.5)	1/16
ULTRA-C-125-1	1/8 (3.2)	3/16 (4.7)	1/32	ULTRA-C-375-2	3/8 (9.5)	1/2 (12.7)	1/16	ULTRA-C-1000-3	1 (25.4)	1-3/16 (30.1)	3/32
ULTRA-C-125-2	1/8 (3.2)	1/4 (6.4)	1/16	ULTRA-C-375-3	3/8 (9.5)	9/16 (14.3)	3/32	ULTRA-C-1000-4	1 (25.4)	1-1/4 (31.7)	1/8
ULTRA-C-125-3	1/8 (3.2)	5/16 (7.9)	3/32	ULTRA-C-375-4	3/8 (9.5)	5/8 (15.9)	1/8	ULTRA-C-1000-5	1 (25.4)	1-3/8 (34.9)	3/16
ULTRA-C-125-4	1/8 (3.2)	3/8 (9.5)	1/8	ULTRA-C-375-5	3/8 (9.5)	3/4 (19.0)	3/16	ULTRA-C-1000-6	1 (25.4)	1-1/2 (38.1)	1/4
ULTRA-C-125-5	1/8 (3.2)	1/2 (12.7)	3/16	ULTRA-C-375-6	3/8 (9.5)	7/8 (22.2)	1/4				
ULTRA-C-125-6	1/8 (3.2)	5/8 (15.8)	1/4	ULTRA-C-500-1	1/2 (12.7)	9/16 (14.3)	1/32				

* Please consult factory for availability

Typical Physical Properties

Property	ASTM Method	Ultra 50 Value or Rating (metric)	Ultra 65 Value or Rating (metric)
Durometer Hardness Shore A, 15 Sec	D2240	50	65
Tensile Strength psi (MPa)	D412	1293 (8.91 MPa)	1373 (9.47 MPa)
Ultimate Elongation, 100%	D412	719	608
Tear Resistance ppi (kN/m)	D624	185 (50.1 Kn/M)	179 (50.1 Kn/M)
Specific Gravity	D792	1.14	1.17
Tensile Modulus, at 200% elongation psi (MPa)	D412	200 (1.38 MPa)	302 (2.08 MPa)

Unless otherwise noted, all tests were conducted at room temperature (73°F). Values shown were determined on 0.075" thick extruded strip or 0.075" thick molded ASTM plaques or molded ASTM durometer buttons.

Sani-Tech® Ultra Options

- Custom laylines
- Gamma irradiated
- Bulk spool packaging
- Custom sizes available
- Available in custom lengths and durometers

Sterilization Methods

- Autoclavable
- Radiation – up to 5.0 Mrad (50 Kilogray)
- Gas – ethylene oxide

For more than four decades, Saint-Gobain Performance Plastics and its family of companies have supplied the world with innovative, high-performance polymer products for the most demanding applications. Our tradition of excellence goes back more than 300 years through our parent company, Compagnie de Saint-Gobain, one of the world's top 100 industrial corporations, with operations in 57 countries. This successful corporation has been built with the single purpose of serving the customer and a commitment to quality and leadership in each of the industries served.



BIOPHARMACEUTICAL PRODUCTS MANUFACTURING FACILITIES

Saint-Gobain Performance Plastics
700 Warner Blvd.
Taunton, MA 02780
Tel: (800) 722-7106
Tel: (508) 823-7701
Fax: (508) 823-1438

Saint-Gobain Performance Plastics
Grindwell Norton Ltd,
Devanahalli Road,
Off Old Madras Road,
Bangalore, 560049, India
Tel: +91 80 28472900
Fax: +91 80 280472616

Saint-Gobain Performance Plastics
3910 Terry-Diane Street
Beaverton, MI 48612
Tel: (888) 387-0067
Tel: (989) 435-9533
Fax: (989) 435-2355

Saint-Gobain Performance Plastics
460 Milltown Road
Bridgewater, NJ 08807
Tel: (800) 435-3992
Tel: (908) 218-8888
Fax: (908) 218-9009

Saint-Gobain Performance Plastics
2664 Gilchrist Road
Akron, OH 44305
Tel: (800) 798-1554
Tel: (330) 798-9240
Fax: (330) 798-6968

Saint-Gobain Performance Plastics
La Mothe-aux-Aulnaies
F-89120 Charny, France
Tel: (33) 3-86-63-78-78
Fax: (33) 3-86-63-77-77

Saint-Gobain Performance Plastics
4451 110th Avenue North
Clearwater, FL 33762
Tel: (800) 541-6880
Tel: (727) 531-4191
Fax: (727) 530-5603

Saint-Gobain Performance Plastics
Saint-Gobain KK
10801-5, Haramura, Suwa-gun
Nagano 391-0106 Japan
Tel: (81) 266-79-6400
Fax: (81) 266-70-1001

Consult a Saint-Gobain Performance Plastics Sales Representative for the product and material formulation that best suits your specific application needs.

WWW.BIOPHARM.SAINT-GOBAIN.COM



Sani-Tech™ is a trademark of Saint-Gobain Corporation.

WARNING: The content of Saint-Gobain tubing materials is not certified by the FDA for implant devices and is neither designed nor intended to be used in medical applications involving permanent implantation in the human body or permanent contact with body fluids or tissues. Failure to comply with this warning may lead to serious bodily injury or death.

IMPORTANT: It is the user's responsibility to ensure the suitability and safety of Saint-Gobain Performance Plastics materials for all intended uses. Laboratory, field or clinical tests must be conducted in accordance with applicable requirements in order to determine the safety and effectiveness for use of materials in any particular application. If intended for medical use, it is the user's responsibility to ensure that the materials to be used comply with all applicable medical regulatory requirements.

Limitation of Liability: Except for products for which Saint-Gobain Performance Plastics (SGPPL) has established a specific written warranty, the products described herein are sold by SGPPL without any guarantee and/or warranty, oral or written. User assumes all risk, if any, including the risk of injury, loss or damage, whether direct, consequential or incidental, arising out of the use, misuse or inability to use these products.

SAINT-GOBAIN PERFORMANCE PLASTICS DISCLAIMS ALL IMPLIED WARRANTIES OF MERCHANTABILITY AND FITNESS FOR A PARTICULAR PURPOSE.

NOTE: Saint-Gobain Performance Plastics Corporation does not assume any responsibility or liability for any advice furnished by it, or for the performance or results of any installation or use of the product or of any final product into which the product may be incorporated by the purchaser and/or user.